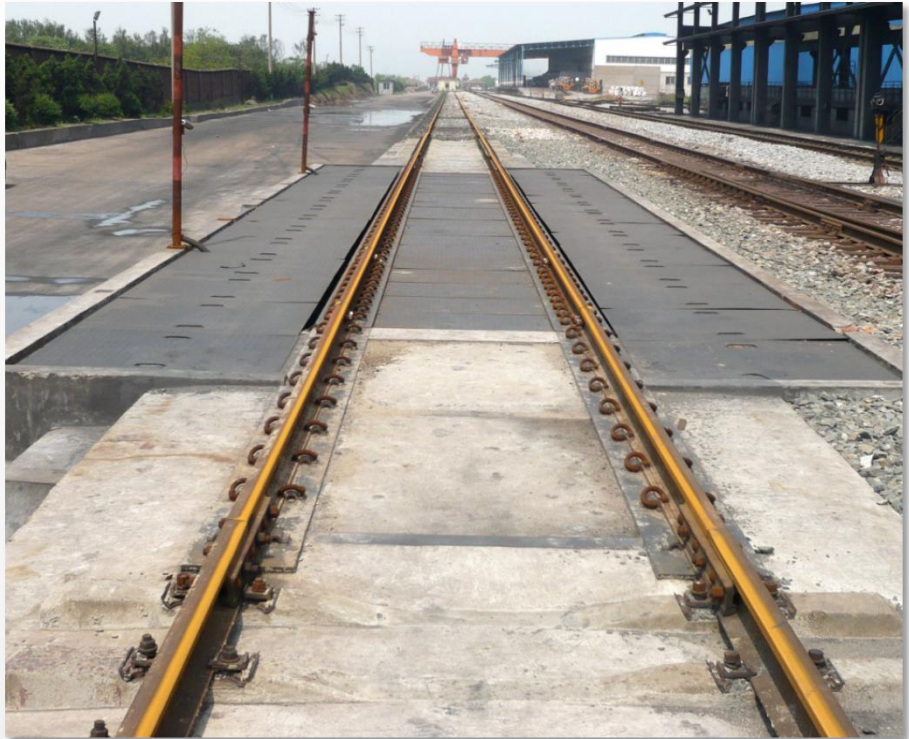


# FULL TRAIN WEIGHING SYSTEMS

Static train weighing systems

## RS-1



### Overview

RS-1 railroad weighing system is a modular I-beam deck scale for static, pit type weighing application of whole train. The scale is mainly used in railway transportation departments, large mining enterprises (such as steel mills, copper mines, power plant, refining, petroleum etc.), harbor wharf, coal industry, large grain depot etc., for measuring and trade settlement on shipping goods such as coal, refined oil, ore, building materials, grain and other bulk goods.

Static train weighing systems  
**RS-1**

**Functions and Features**

- Reliable design, high strength weighbridge
- Modular combination
- Economically shipped anywhere
- Corrosion resistant components
- Intelligent pre-diagnosis
- lightning prevention and cheating prevention
- Less working downtime, long service life



**Specification**

Model	RS-1
Max. Capacity	100t / 150t
Scale Platform length	13 /13.5 /14 /14.5 /17.5 etc
Division	20kg
Accuracy	Ⓜ
Rail Gauge	Customized as required
Rail Type	Customized as required
Working temperature	-40°C ~ +55°C